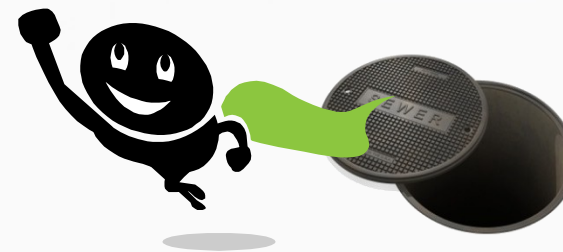


# Selma-Kingsburg-Fowler County Sanitation District

11301 E. Conejo Ave., Kingsburg, CA 93631, (559) 897-6500

## Be a Sewer Hero



Your sewer pipes are there to help keep your home clean and sanitary. Treat them well. Few materials can safely be washed down your pipes: wastewater, human waste, and toilet paper. Other items can clog sewer lines, causing the system to back up or overflow. Throw everything else in the trash.

### ALL THESE ITEMS DO NOT BELONG IN THE SEWER



fats, oils, grease



medications



syringes, needles, razors



cleaning/facial wipes



rags, towels



tampons/applicators  
sanitary pads



food & food wrappers



condoms



cotton balls, swabs, pads



toys



bandages & wrappers



hair



dental floss/teeth  
whitening strips



disposable diapers  
nursing pads



gum



paper towels, tissues



cigarette butts



disposable toilet brushes



cat litter



food stickers



# Sewer Facts



#1. Selma-Kingsburg-Fowler County Sanitation District (SKF) is a special district that collects and treats wastewater and maintains the collection system of the communities of Selma, Kingsburg and Fowler. The treatment plant is located 1.5 miles west of Kingsburg, CA.

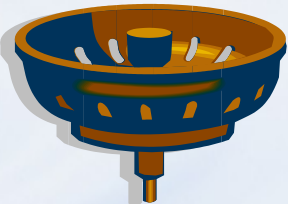
#2. Sewage from your home or business is carried through a complex network of sewer pipes and pump stations all the way to the treatment plant where sewage is cleaned before being discharged into percolation evaporation ponds where water percolates back in the ground.

#3. Sewer problems can occur in different ways. The most common way is when the sewer pipe is blocked due to grease buildup or tree root intrusion. It can also be blocked due to big objects washed down the drain or sewer line failure.

#4. Most sewer problems are preventable. Keep your sewer pipes clean by throwing most of your trash in the trash can. Examples include grease, food, wipes, rags, feminine hygiene products, paper towels, etc. Put baskets or strainers in sink drains to catch food scraps and other solids, then empty them in the trash. Plant trees away from sewer pipes to keep roots from getting in the way.

#5. The homeowner is responsible for the proper maintenance of the sewer line from the house all the way to the main line. If you experience sewer problems, call a licensed plumber. The homeowner or plumber should call SKF immediately if the sewer problem is in the public right-of-way.

#6. If you see sewage on the ground or coming out of pipe, manholes or pump stations, call SKF immediately at (559) 897-6500. We are available **24 hours a day, 7 days a week**.



Committed to our communities. Protecting tomorrow's water resources  
by treating today's wastewater through innovation and superior level of service.